

Putting AI Ethics into Practice: Responsible AI Innovation in Law Enforcement

By

Odhran McCarthy

United Nations Interregional Crime and Justice Research Institute

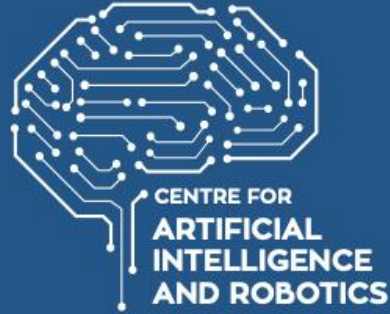
February 2025



unieri

United Nations
Interregional Crime and Justice
Research Institute

At the Forefront of Crime, Justice and the Rule of Law



And Innovation

USE OF AI BY LAW ENFORCEMENT



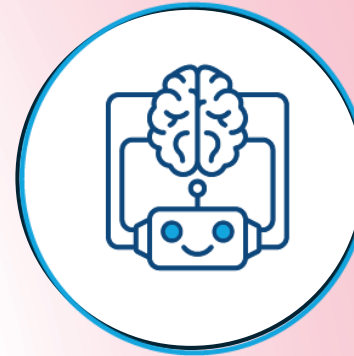
Images Analysis



Text and Speech
Analysis



Risk evaluation
and predictive analytics



Content
generation



Process optimization and
workflow automation

RISKS AND REWARDS

If not used properly, AI may pose serious risks to individuals and societies



It may result in unethical and unfair outcomes and negatively impact human rights



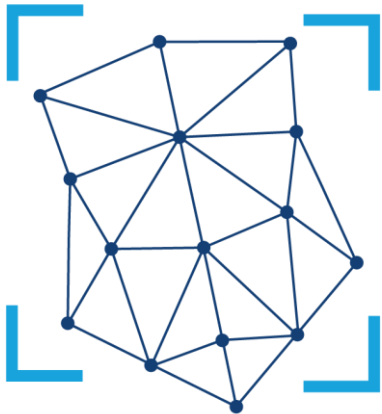
It may erode fundamental rule of law principles, such as the presumption of innocence



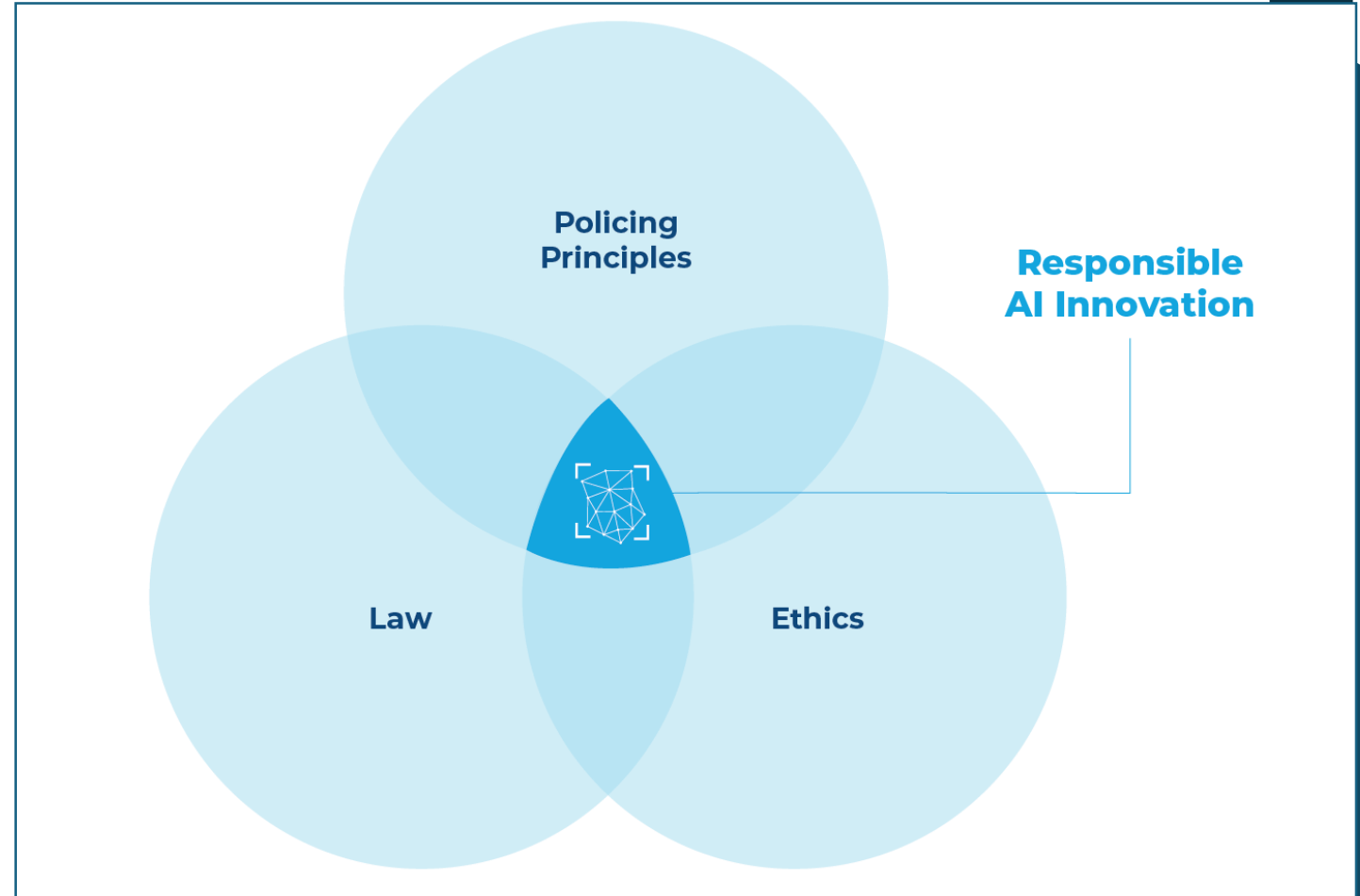
Public trust in law enforcement can be undermined

AI IN LAW ENFORCEMENT NEEDS TO BE RESPONSIBLE

BUT WHAT IS RESPONSIBLE AI?



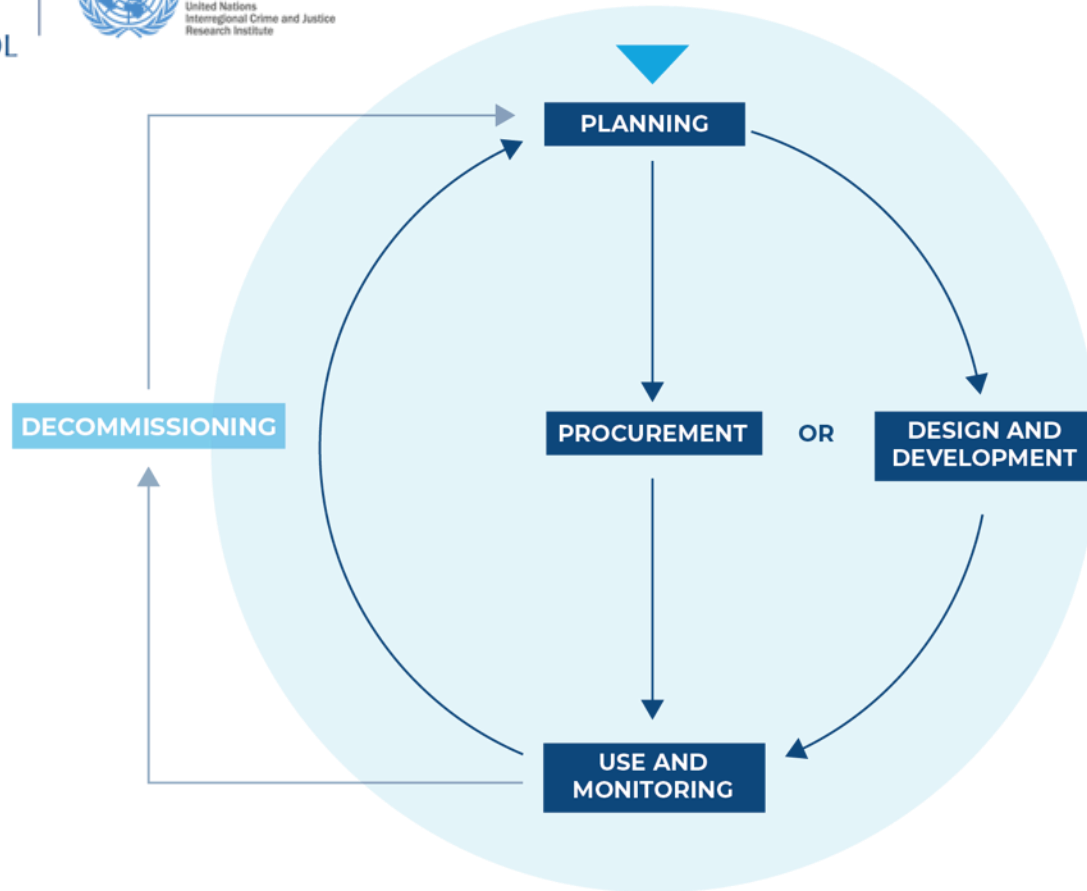
- respects the law & human rights
- minimizes any harm to people
- respects human autonomy
- promotes fairness
- is supported by good governance



OUR PRINCIPLES OF RESPONSIBLE AI

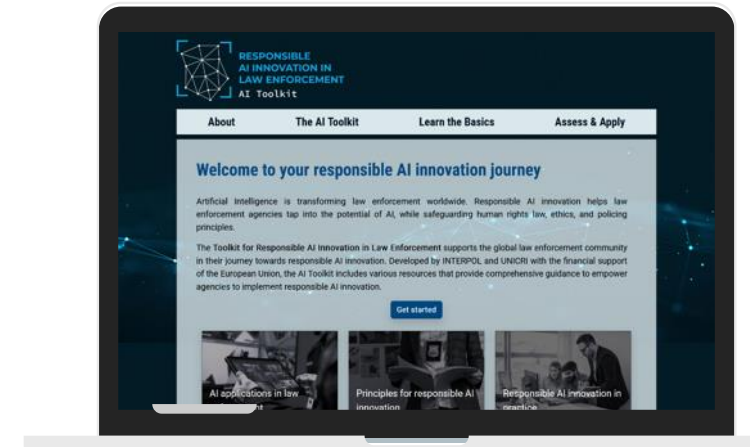
- Avoids re-inventing the wheel
- Grounded in existing principles of policing
- And AI frameworks

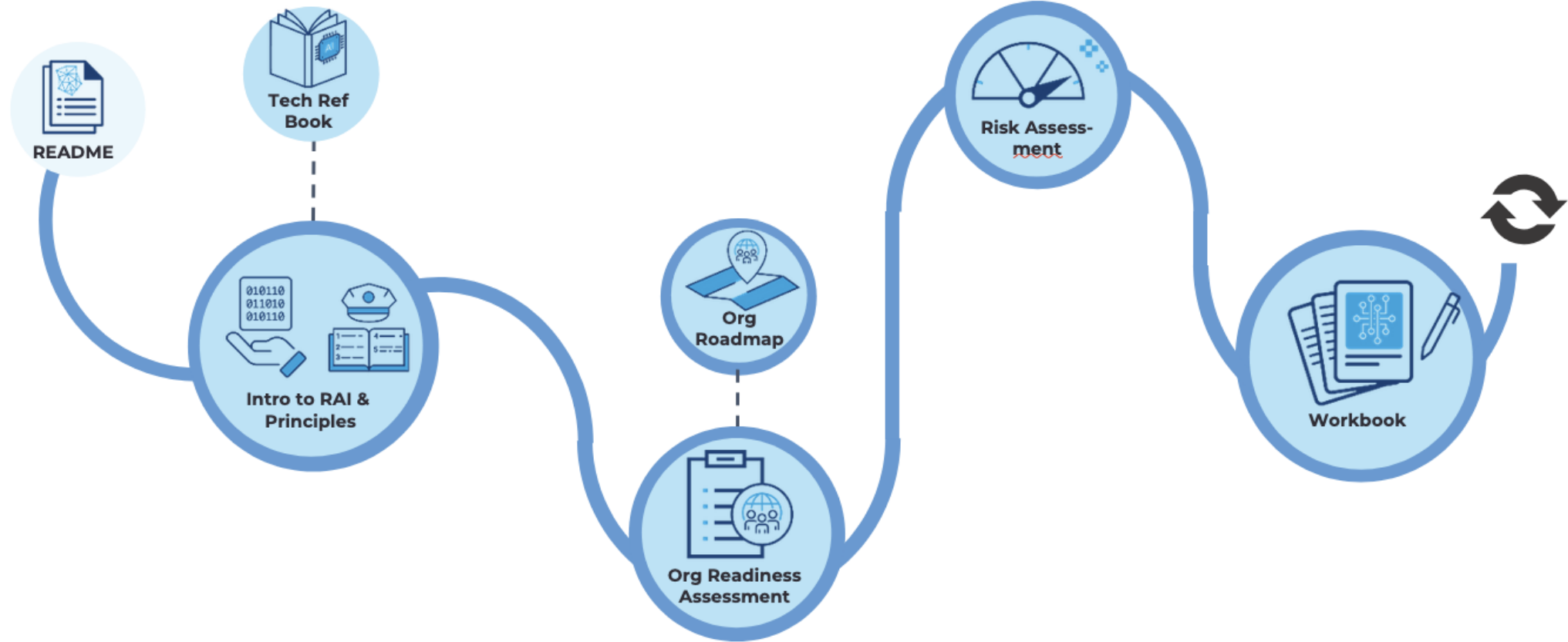






TOOLKIT FOR RESPONSIBLE AI INNOVATION IN LAW ENFORCEMENT





Suggested pathway



Funded by
the European Union



unieri
United Nations
Interregional Crime and Justice
Research Institute

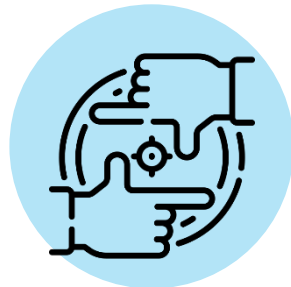
Ai-POL

AI-POL

Advancing Innovation, Governance and Responsible AI in Law Enforcement



Engaging
with senior
leadership



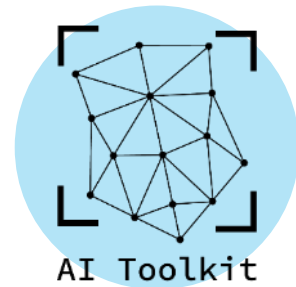
Use-
case/context
specific
guidance



Supporting
community
engagement



Raising-
awareness



Expanding the
AI Toolkit

Key take-aways



Scan or visit
ai-lawenforcement.org

- Responsible AI innovation helps minimizing the risks and maximizing the benefits.
- Respects the law, minimizes any harm, respects human autonomy, promotes fairness and is supported by good governance.
- It is a journey, not an end destination.
- Check our **AI Toolkit** for supporting resources and stay tuned to **#AI-POL** for more!

Ai-POL

ODHRAN MCCARTHY – UNICRI

ODHRAN.MCCARTHY@UN.ORG

THANK YOU!

#AI-POL #RESPONSIBLEAI
#RESPONSIBLEPOLICING

